



National Institute for Earth Physics - Magurele

Seismic report - manual

Event local time: Sat Mar 15,2025 13:42:54

Romania - Event 15114254 - Vrancea seismic zone

Sat Mar 15, 2025 11:42:54 GMT ML 3.0 N45.62 E26.55 Depth: 111.1km ID:15114254

NOTE: Accelerations, velocities and intensities are calculated automatically and are not revised by human operator. Their accuracy has not been evaluated.

Seismicity of Romania - latest large intermediate earthquakes

Date	Time	Lon	Lat	Depth	Mw
03-Nov-2022	04:50:25	26.53	45.49	149.0	4.9
28-Oct-2018	00:38:11	26.41	45.61	147.8	5.5
27-Dec-2016	23:20:55	26.60	45.71	96.9	5.6
23-Sep-2016	23:11:20	26.62	45.71	92.0	5.5
06-Oct-2013	01:37:21	26.50	45.67	135.1	5.2
01-May-2011	02:24:15	26.40	45.58	146.1	4.9
25-Apr-2009	17:18:48	26.60	45.68	109.6	5.4
13-Dec-2005	12:14:45	26.70	45.68	136.8	4.9
18-Jun-2005	15:16:41	26.60	45.72	153.7	5.2
14-May-2005	01:53:21	26.50	45.64	148.5	5.5

Source: ROMPLUS Catalogue

Romania – Event 15114254 – Vrancea seismic zone

Attenuation laws – GMPE::VS10 IPE::VS04_msk

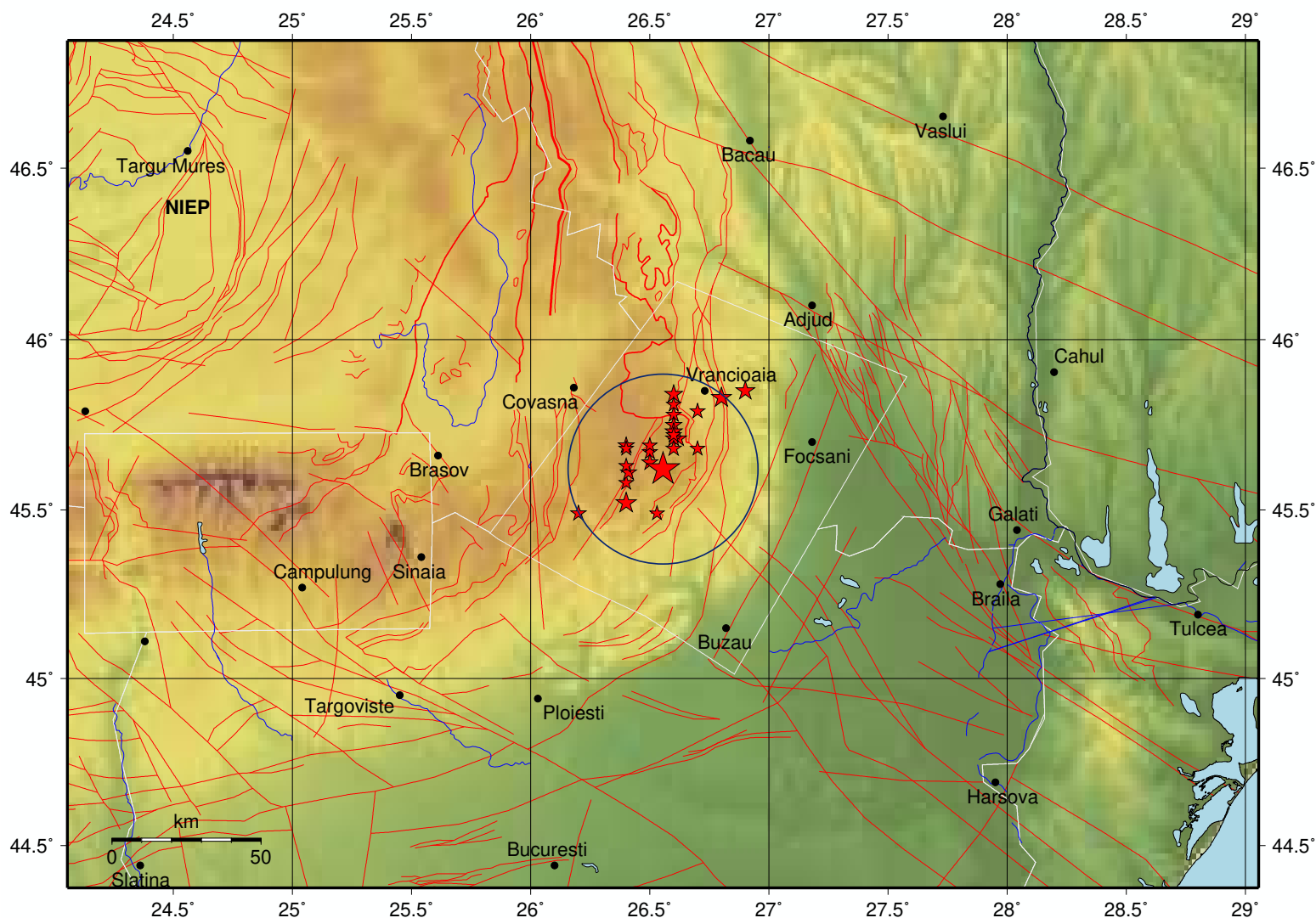
Max. grid values – pga: 0.39(cm/sec**) pgv: 0.00(cm/sec) mi: 1.6

Sat Mar 15, 2025 11:42:54 GMT ML 3.0 N45.62 E26.55 Depth: 111.1km ID:15114254 **Mw 3.0**

Local time

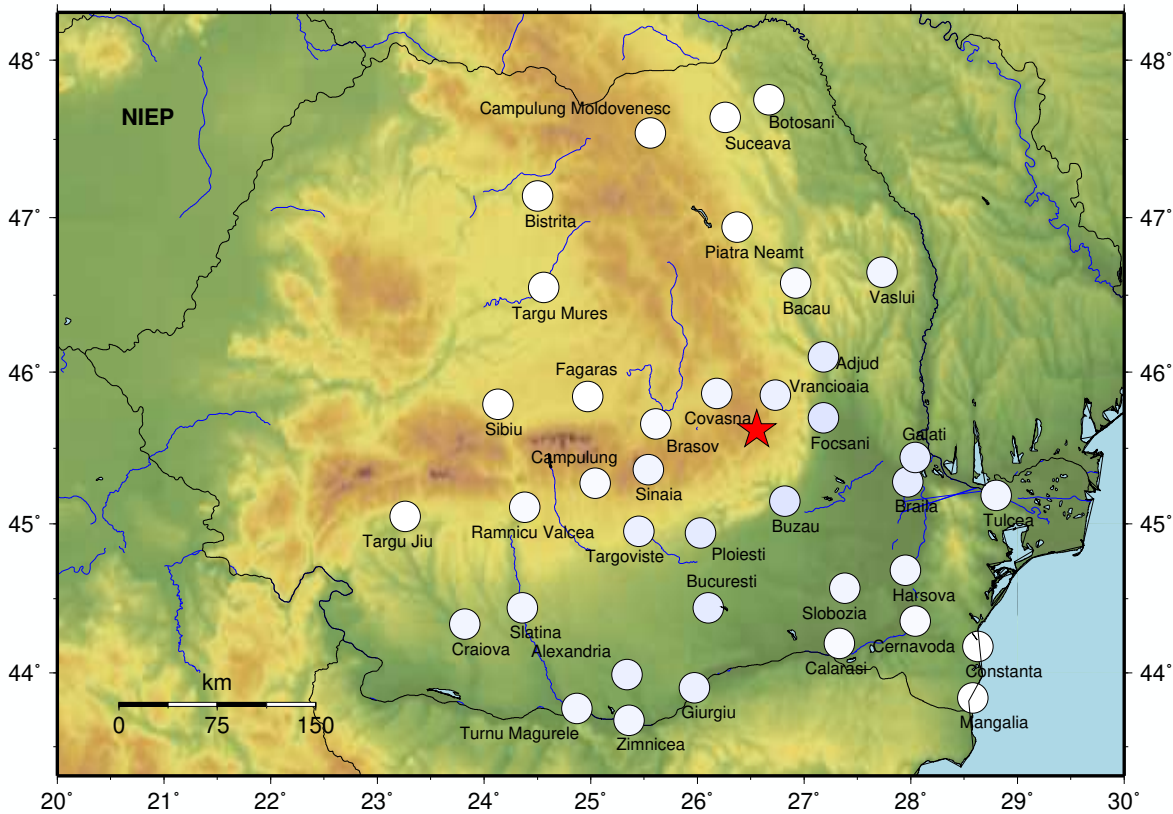
Sat Mar 15, 2025 13:42:54

Fault lines



Estimated intensities based on IPE::VS04_msk attenuation law

Sat Mar 15, 2025 11:42:54 GMT ML 3.0 N45.62 E26.55 Depth: 111.1km ID:15114254



City	Distance(km)
Vrancea	28
Covasna	39
Focsani	49
Buzau	56
Adjud	72
Brasov	73
Sinaia	84
Ploiesti	86
Bacau	110
Targoviste	114
Braila	116
Galati	117
Campulung	124
Fagaras	125
Slobozia	133
Bucuresti	136
Vaslui	146
Piatra Neamt	147
Harsova	150
Calarasi	169
Ramnicu Valcea	179
Tulcea	182
Cernavoda	183
Targu Mures	185
Sibiu	189
Giurgiu	196
Alexandria	205
Slatina	217
Suceava	225
Campulung M.	226
Constanta	229
Bistrita	231
Zimnicea	235
Botosani	236
Turnu Magurele	246
Mangalia	255
Craiova	259
Targu Jiu	265

PERCEIVED SHAKING	Not felt	Weak	Light	Moderate	Strong	Very strong	Severe	Violent	Extreme
POTENTIAL DAMAGE	none	none	none	Very light	Light	Moderate	Moderate/Heavy	Heavy	Very Heavy
INSTRUMENTAL INTENSITY	I	II-III	IV	V	VI	VII	VIII	IX	X+

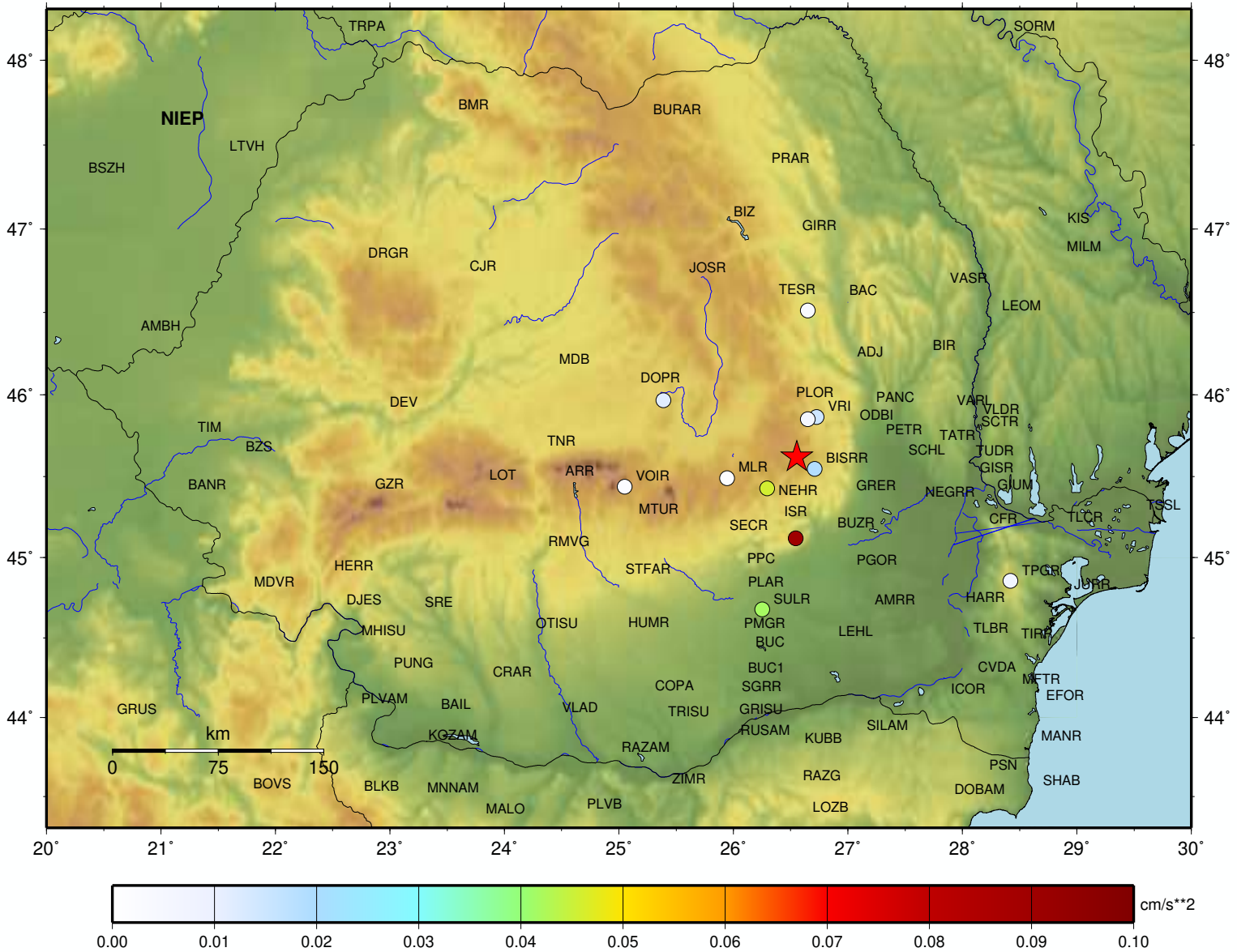
The largest accelerations recorded automatically by the seismic stations of "Instalatie de Interes National- Retea Seismica Nationala (IOSIN-RSN)"

Max. pga (cm/sec**2)

Observed stations accelerations – Antelope platform (cm/sec**2)

Maximum observed acceleration: ISR_HNE 0.09

Sat Mar 15, 2025 11:42:54 GMT ML 3.0 N45.62 E26.55 Depth: 111.1km ID:15114254



The largest velocities recorded automatically by the seismic stations of "Instalatie de Interes National- Retea Seismica Nationala (IOSIN-RSN)"

Max. pgv (cm/sec)

Observed stations velocities – Antelope platform (cm/sec)

Maximum observed velocity: BISRR_HHE 0.00

Sat Mar 15, 2025 11:42:54 GMT ML 3.0 N45.62 E26.55 Depth: 111.1km ID:15114254

